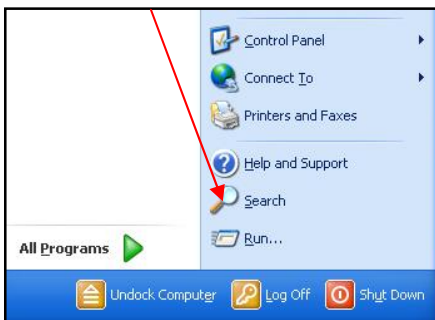


Creating a Desktop Icon to Locate and Clean 3D Lightyear™ Files

3D Lightyear™ creates numerous files in the background operations. These files are message files, edited support files, slice files, etc. Some of them are quite small, but can become a nuisance when searching a folder and larger files take up disk space.

The following procedure will show you how to create a Windows® Desktop icon to perform a search of specific files.

- 1) Left mouse click the **Start** button. Select **Search**.



(Windows XP® shown)



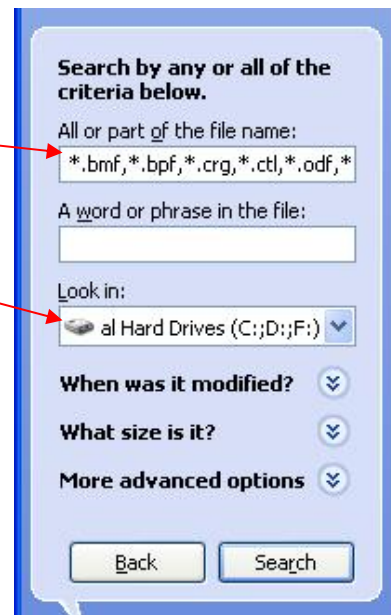
- 2) In the **Search Results** box, select **All files and folders**.

- 3) Enter the files to search for in the **All or part of the file name:** box.

Select the Drive(s) in the **Look in:** box and select **Search**

The files requested will be listed and can be sorted by Date, Type, Size or Folder location and deleted.

Note: Use * (as a *wildcard*) with the filename extension and separate files with commas. Also remember that other software programs may use similar extensions.

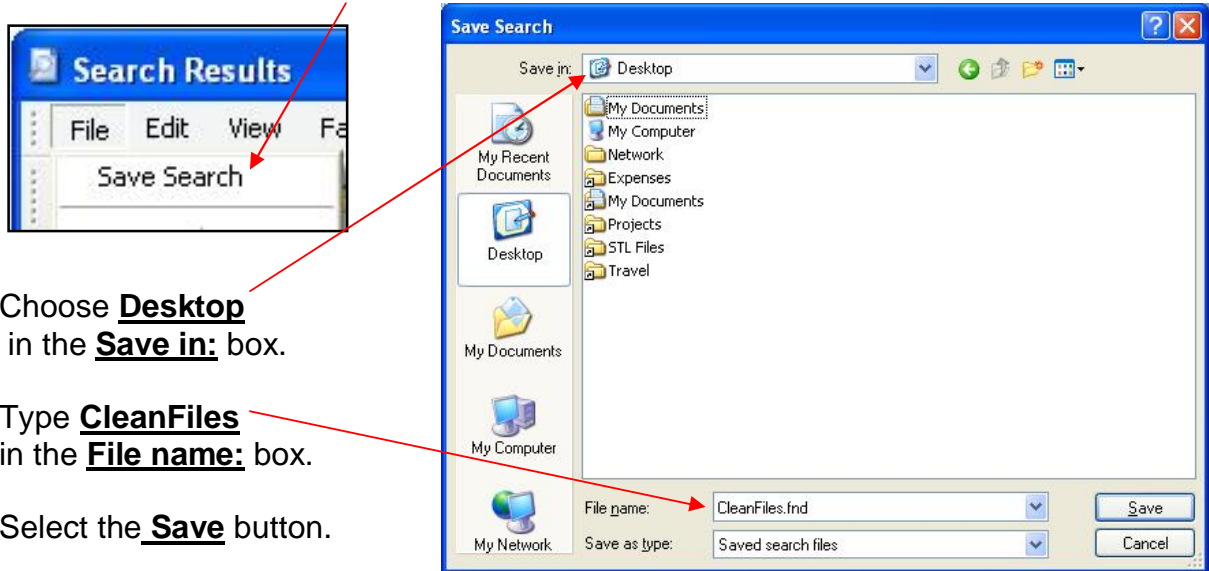


Suggested files include:

***.*,*.bmf,*.bpf,*.crg,*.ctl,*.odf,*.pla,*.sli,*.smf,*.smp,*.v_d,*.vmf,3DPlatform.*,*_s.stl**
(see 3D Lightyear™ Files and Definitions chart at the end of this document)

Creating a Desktop Icon to Locate and Clean 3D Lightyear™ Files

- 4) To save this as an Icon on your Windows® Desktop, in the **Search Results** box select **File, Save Search**.



- 5) Choose **Desktop** in the **Save in:** box.

Type **CleanFiles** in the **File name:** box.

Select the **Save** button.

- 6) You now have an Icon named **CleanFiles.fnd** on your Windows® Desktop that will search for the files you specified.



3D Lightyear™ Files and Definitions

_.stl	Support file for STL
bff	Output for Buildstation™ software "Build File Format"
bmf	Message file from Background Preparation operation (see bpf)
bpf	Background Preparation File
crg	Message file showing parameter settings used during slice
ctl	Used to edit supports (see _.stl)
odf	Used to edit supports (see _.stl)
pla	Platform file with parts and parameters associated
sli	Sliced file used to create BFF
smf	Message file from slice operation
smp	Snapshot file used for preview
stl	Stereolithography tessellated file (triangles producing a "watertight" model)
v_d	Vents and Drains created with QuickCast™ parameters
vmf	Message file from Verify operation
3DPlatform	Default name if no name is assigned to platform (pla) file
l, r, v, prm	SLA 250 build files (instead of bff) - Layer, Recoat, Vector and Parameters

- 3D Lightyear, Buildstation and QuickCast are registered trademarks of the 3D Systems Corporation.
- Windows and Windows XP are registered trademarks of the Microsoft Corporation.